

13.245  
11.691  
11.561  
7.529  
7.528  
7.510  
7.492  
7.474  
7.459  
7.458  
7.344  
7.323  
7.294  
7.291  
7.267  
7.264  
7.247  
7.226  
6.806  
5.120  
5.109  
5.053  
5.040  
5.014  
5.005  
4.976  
4.973  
4.959  
4.950  
4.883  
4.865  
4.825  
4.814  
4.789  
4.784  
4.702  
4.683  
4.545  
4.531  
4.517  
4.517  
3.804  
3.801  
3.774  
3.707  
3.695  
3.680  
3.678  
3.669  
3.562  
3.548  
3.534  
3.480  
3.466  
3.451  
3.437  
3.422  
3.377  
3.368  
3.354  
3.344  
3.234  
3.225  
3.203  
3.191  
3.150  
3.124

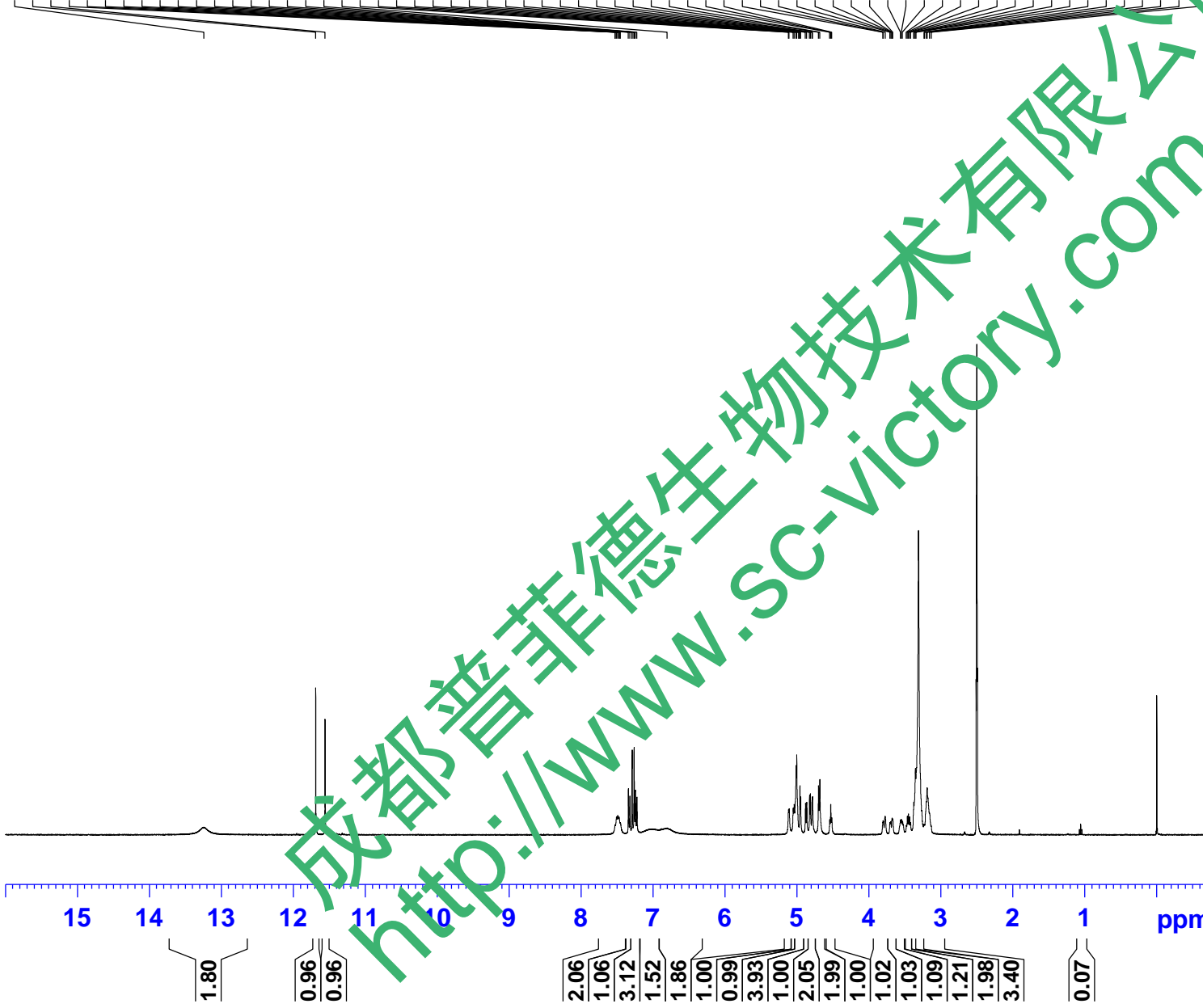


Current Data Parameters  
 NAME Sennoside B-1H NMR DMSO  
 EXPNO 1  
 PROCNO 1

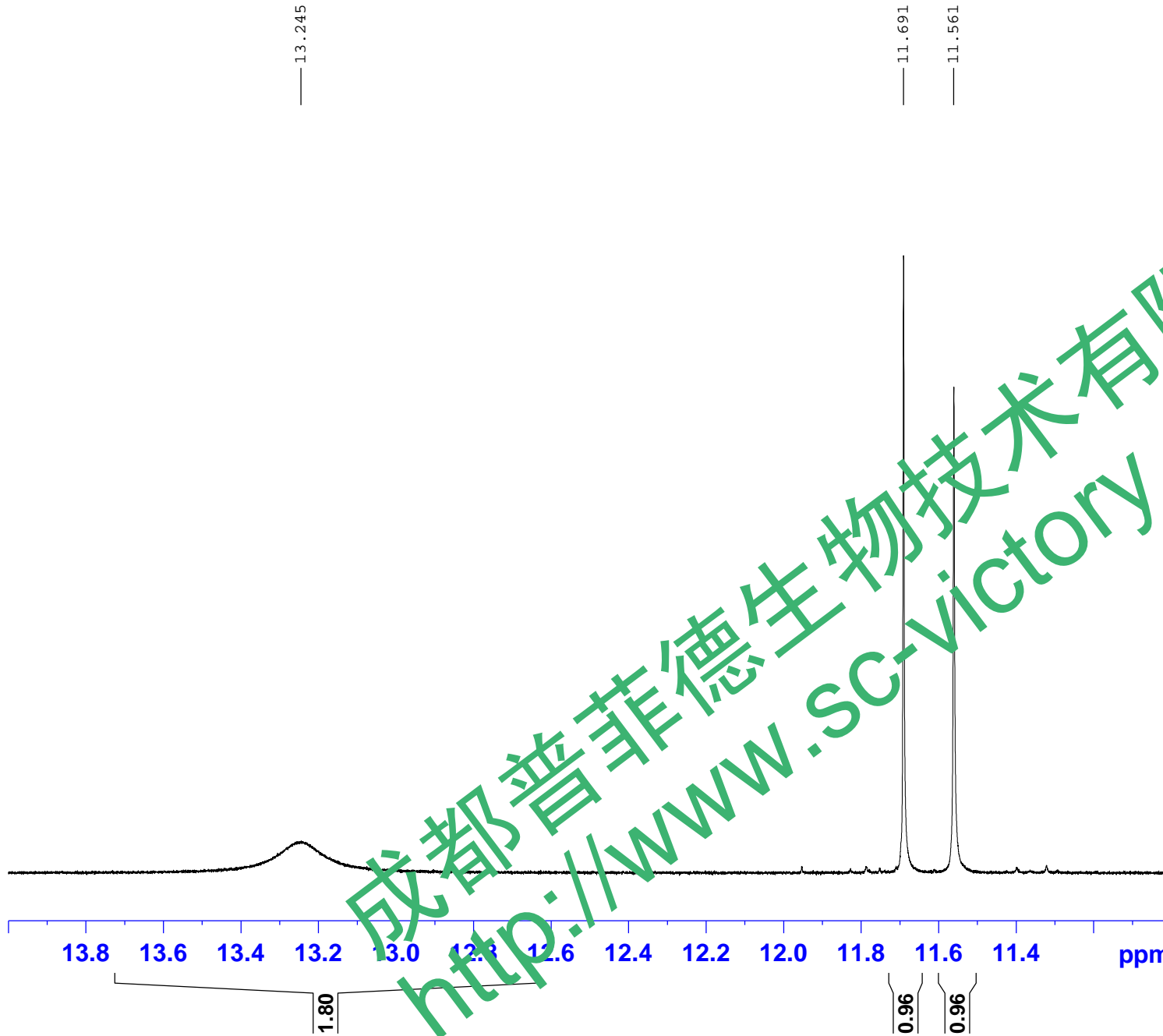
F2 - Acquisition Parameters  
 SWH 8012.820 Hz  
 Date\_  
 Time 13.42  
 INSTRUM spect  
 PROBHD 5 mm PABBO BB/  
 PULPROG zg30  
 TD 65536  
 SOLVENT DMSO  
 NS 64  
 DS 2  
 FIDRES 0.122266 Hz  
 AQ 4.0894465 sec  
 RG 202.5  
 DW 62.400 usec  
 DE 6.50 usec  
 TE 301.2 K  
 D1 2.00000000 sec  
 TD0 1

==== CHANNEL f1 =====  
 SFO1 400.1324710 MHz  
 NUC1 1H  
 P1 14.79 usec  
 PLW1 11.50800037 W

F2 - Processing parameters  
 SI 262144  
 SF 400.1300025 MHz  
 WDW no  
 SSB 0  
 LB 0 Hz  
 GB 0  
 PC 1.00



成都普菲德生物技术有限公司  
<http://www.sc-victory.com>



Current Data Parameters  
NAME Senrioside B-1H NMR DMSO  
EXPNO 1  
PROCNO 1

F2 - Acquisition Parameters  
SFO1 8012.820 Hz  
FIDRES 20160413  
RG 13.42  
INSTRUM spect  
PROBHD 5 mm PABBO BB/  
PULPROG zg30  
TD 65536  
SOLVENT DMSO  
NS 64  
DS 2  
AQ 0.122266 Hz  
RG 4.0894465 sec  
DW 202.5  
DE 62.400 usec  
TE 6.50 usec  
D1 301.2 K  
D1 2.00000000 sec  
TD0 1

==== CHANNEL f1 =====  
SFO1 400.1324710 MHz  
NUC1 1H  
P1 14.79 usec  
PLW1 11.50800037 W

F2 - Processing parameters  
SI 262144  
SF 400.1300025 MHz  
WDW no  
SSB 0  
LB 0 Hz  
GB 0  
PC 1.00

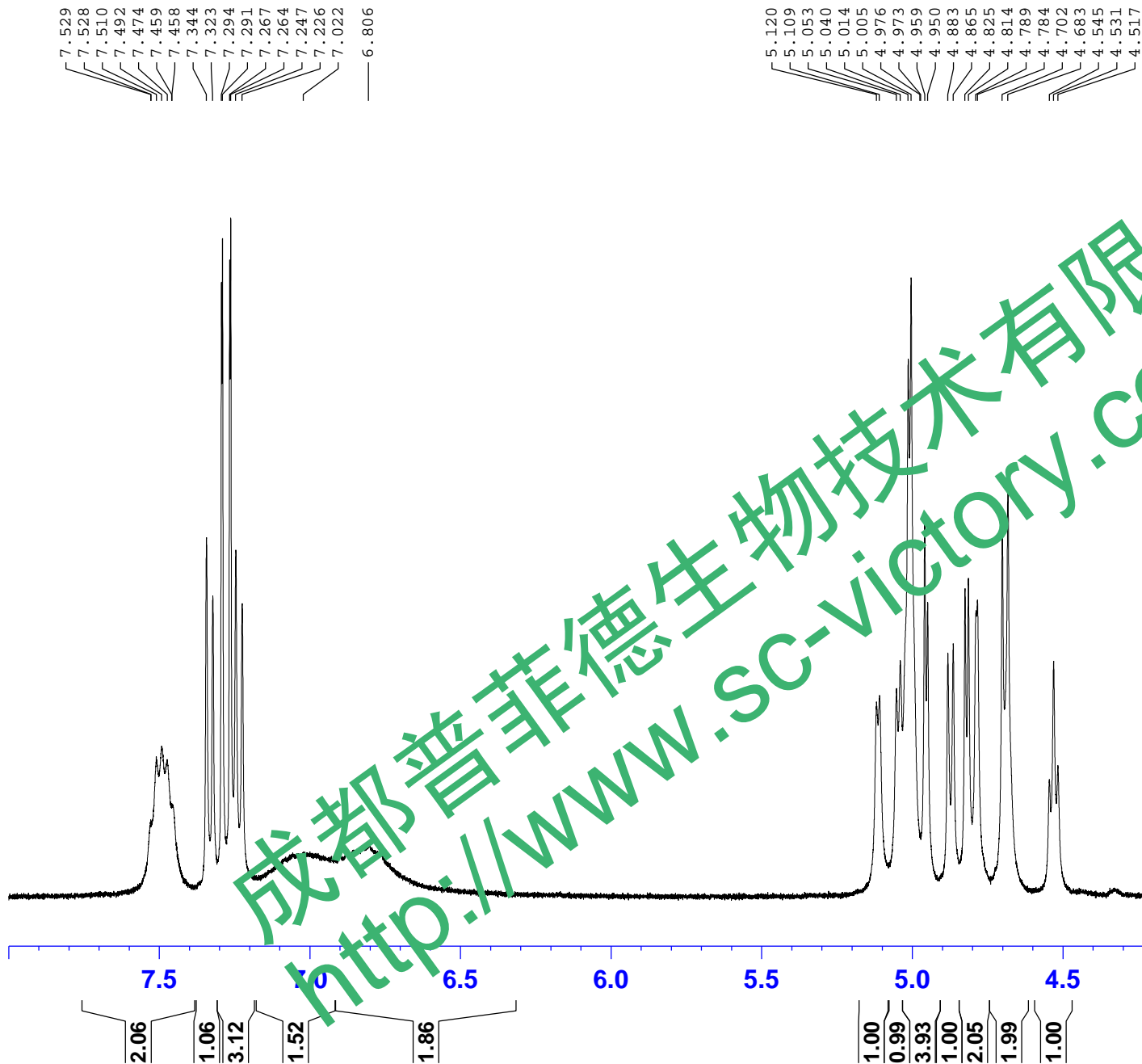


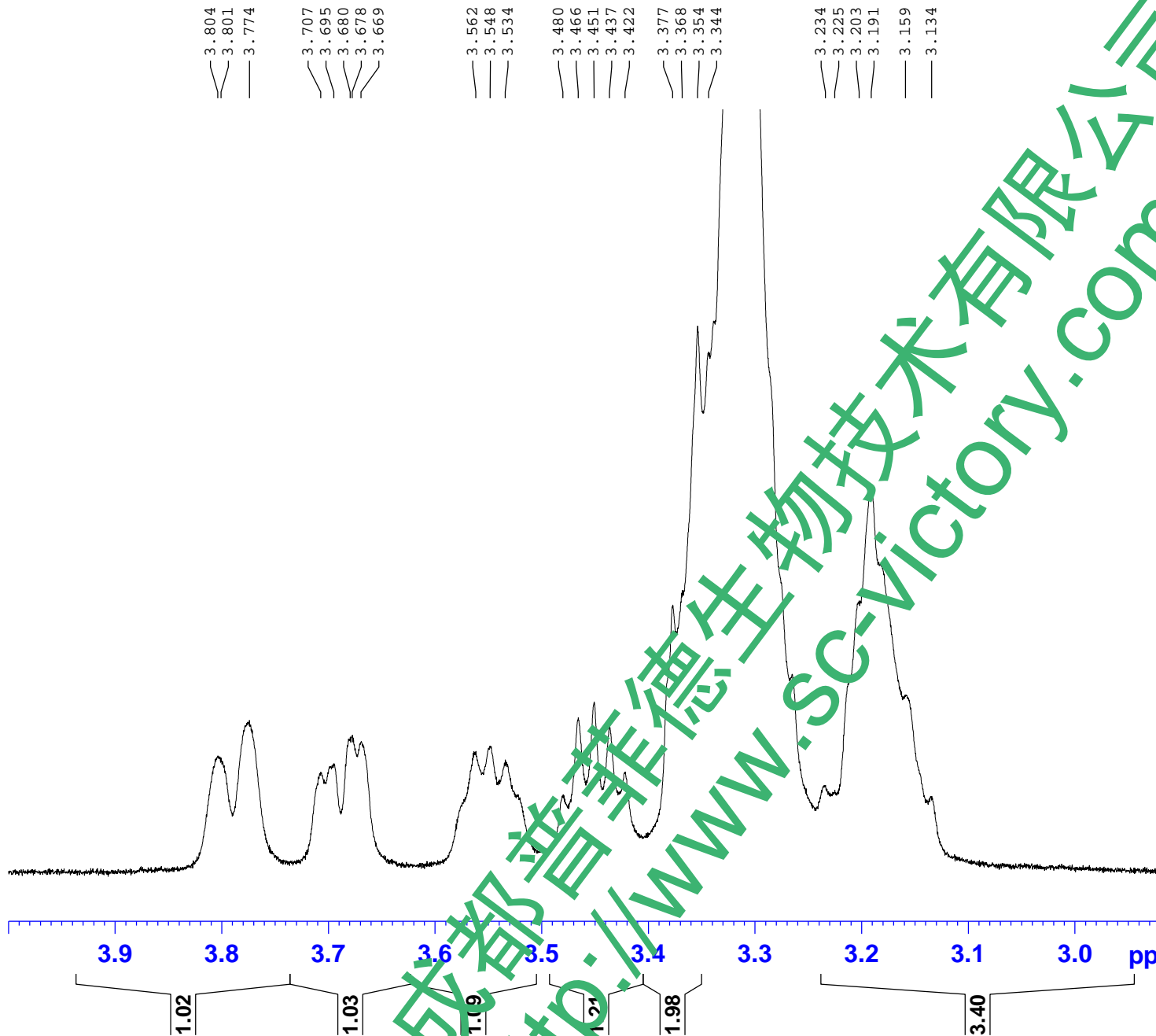
Current Data Parameters  
NAME Sennoside B-1H NMR DMSO  
EXPNO 1  
PROCNO 1

F2 - Acquisition Parameters  
SWH 8012.820 Hz  
Faq\_ 20160413  
Time 13.42  
INSTRUM spect  
PROBHD 5 mm PABBO BB/  
PULPROG zg30  
TD 65536  
SOLVENT DMSO  
NS 64  
DS 2  
FIDRES 0.122266 Hz  
AQ 4.0894465 sec  
RG 202.5  
DW 62.400 usec  
DE 6.50 usec  
TE 301.2 K  
D1 2.00000000 sec  
TD0 1

===== CHANNEL f1 =====  
SFO1 400.1324710 MHz  
NUC1 1H  
P1 14.79 usec  
PLW1 11.50800037 W

F2 - Processing parameters  
SI 262144  
SF 400.1300025 MHz  
WDW no  
SSB 0  
LB 0 Hz  
GB 0  
PC 1.00





3.804  
3.801  
3.774  
3.707  
3.695  
3.680  
3.678  
3.669  
3.562  
3.548  
3.534  
3.480  
3.466  
3.451  
3.437  
3.422  
3.377  
3.368  
3.354  
3.344  
3.234  
3.225  
3.203  
3.191  
3.159  
3.134

Current Data Parameters  
NAME Sennoside B-1H NMR DMSO  
EXPNO 1  
PROCNO 1

F2 - Acquisition Parameters  
SWH 8012.820 Hz  
Date\_ 20160413  
Time 13.42  
INSTRUM spect  
PROBHD 5 mm PABBO BB/  
PULPROG zg30  
TD 65536  
SOLVENT DMSO  
NS 64  
DS 2  
FIDRES 0.122266 Hz  
AQ 4.0894465 sec  
RG 202.5  
DW 62.400 usec  
DE 6.50 usec  
TE 301.2 K  
D1 2.00000000 sec  
TD0 1

==== CHANNEL f1 =====  
SFO1 400.1324710 MHz  
NUC1 1H  
P1 14.79 usec  
PLW1 11.50800037 W

F2 - Processing parameters  
SI 262144  
SF 400.1300025 MHz  
WDW no  
SSB 0  
LB 0 Hz  
GB 0  
PC 1.00