

10.650  
 7.860  
 7.820  
 7.731  
 7.725  
 7.711  
 7.707  
 7.688  
 7.648  
 7.486  
 7.476  
 7.472  
 7.463  
 7.456  
 7.449  
 7.446  
 7.438  
 6.044  
 6.038  
 5.957  
 5.952  
 3.892

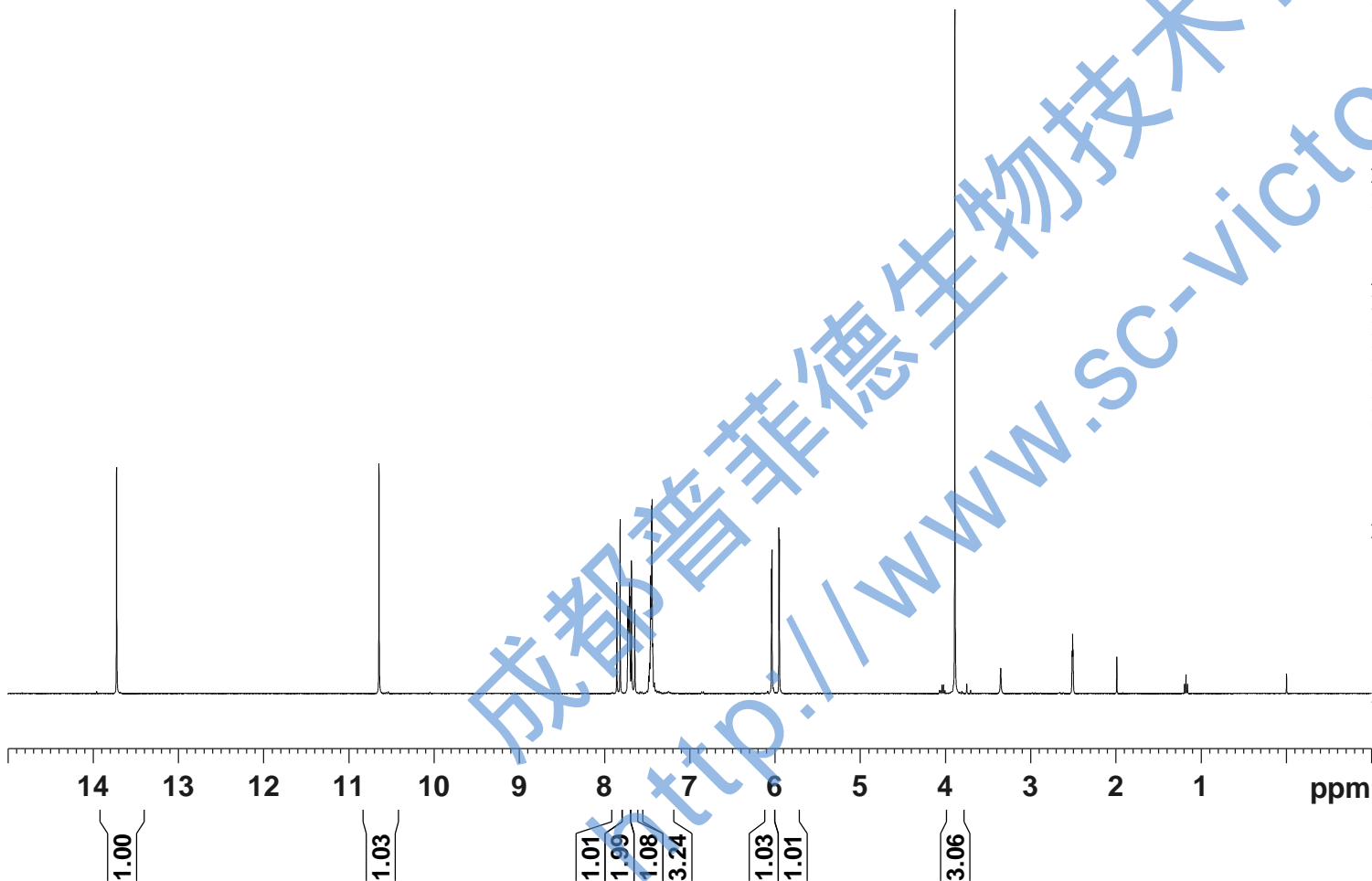


Current Data Parameters  
 NAME XiaoDouKouMing-1H NMR DMSO  
 EXPNO 1  
 PROCNO 1

F2 - Acquisition Parameters  
 Date\_ 20180308  
 Time 15.12  
 INSTRUM spect  
 PROBHD 5 mm PABBO BB/  
 PULPROG zg30  
 TD 65536  
 SOLVENT DMSO  
 NS 2  
 DS 2  
 SWH 8012.820 Hz  
 FIDRES 0.122266 Hz  
 AQ 4.0894465 sec  
 RG 92  
 DW 62.400 usec  
 DE 6.50 usec  
 TE 301.1 K  
 D1 1.00000000 sec  
 TD0 1

===== CHANNEL f1 =====  
 SF01 400.1324710 MHz  
 NUC1 1H  
 P1 14.79 usec  
 PLW1 11.50800037 W

F2 - Processing parameters  
 SI 65536  
 SF 400.1299991 MHz  
 WDW EM  
 SSB 0  
 LB 0.30 Hz  
 GB 0  
 PC 1.00  
 SR -0.91 Hz



成都普菲德生物技术有限公司  
 www.sc-victor.com

— 191.72

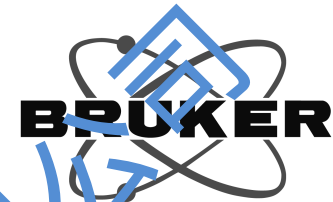
— 166.26  
— 165.02  
— 162.67

— 141.70  
— 134.90  
— 130.23  
— 128.98  
— 128.31  
— 127.49

— 105.11

— 95.82  
— 91.67

— 55.98



Current Data Parameters  
NAME XiaoDouKouling-13C NMR DMSO  
F1PNO 2  
PROCNO 1

F2 - Acquisition Parameters  
Date\_ 20180308  
Time 15.21  
INSTRUM spect  
PROBHD 5 mm PABBO BB/  
PULPROG zgig30  
TD 65536  
SOLVENT DMSO  
NS 132  
DS 4  
SWH 24038.461 Hz  
FIDRES 0.366798 Hz  
AQ 1.3631488 sec  
RG 202.5  
DW 20.800 usec  
DE 6.50 usec  
TE 301.1 K  
D1 2.00000000 sec  
D11 0.03000000 sec  
TD0 1

==== CHANNEL f1 =====  
SFO1 100.6228298 MHz  
NUC1 13C  
P1 10.13 usec  
PLW1 51.00000000 W

==== CHANNEL f2 =====  
SFO2 400.1316005 MHz  
NUC2 1H  
CPDPRG[2] waltz16  
PCPD2 90.00 usec  
PLW2 11.50800037 W  
PLW12 0.31077999 W

F2 - Processing parameters  
SI 262144  
SF 100.6128220 MHz  
WDW EM  
SSB 0  
LB 1.00 Hz  
GB 0  
PC 1.40  
SR 52.97 Hz

成都普菲德生物技术有限公司  
http://www.sc-victory.com

